

Turning Around every corner to Capture Invisible Abnormality

Comfortable and efficient measurement can be operated while checking the screen of controller holding by your hand even in a narrow gaps such as backside of the pipes and even at the high or low angle place such as ceiling or floor conventionally.



Thermo FLEX F50 FREE STYLE



Rotation Style

Camera-head can be rotated with mounted on the controller. Stable measurement can be available by a hand.



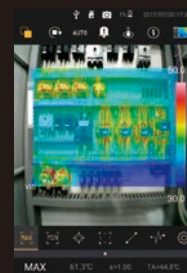
Separation Style

Camera-head can be removed from the controller. Freely measurement can be done in any place.

Wide-angle 70° lens makes work more efficient



The 2 types of the camera-head with 70° or 35° wide angle lens can be covered with wide area. Measuring time will be drastically reduced. Unnecessary to adjust the focus owing to the wide angle lens, even inexperienced operators can shoot efficiently.



Easy-to-handle portability on site



The camera-head can be attached to a helmet with a sense of wearable. The attached camera-head which can be performed in conjunction with your line-of-sight increases the efficiency of measurement.



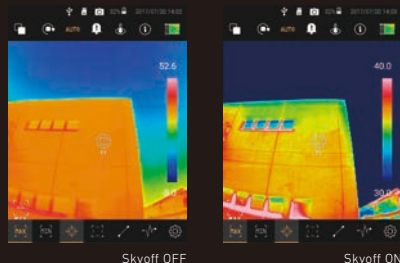
You can wear the camera around your neck with a strap to prevent from falling of the camera, and to have your hands free.

Various functions support swift and efficient measurement.

THERMAL IMAGING CAMERA "Thermo FLEX F50"

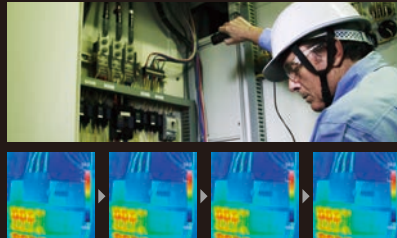
"Sky Off" Function – "Auto-Scale" works by optimally at outdoor

You can set the auto-scale's upper/lower values by ignoring the temperature of the above/below threshold values. The accuracy of "Auto-scale" will be increased with masking the temperature of cloud and sun.



"Burst Shooting" Function – Quick shooting for even at unstable place

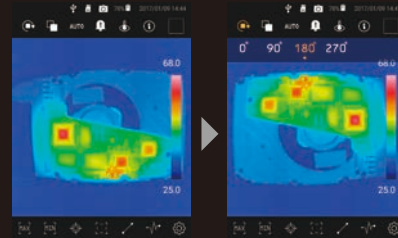
"Burst shooting" function can be used for quick shooting at the unstable place where you cannot keep shooting angle or keep your posture. You can choose the best shot taking your time after quick burst shooting.



Press and hold Shutter button for continuous shooting

"Image Rotation" Function

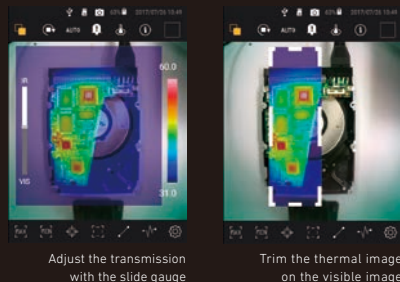
"Image Rotation" function can be rotated the image of screen at every 90° to correct the orientation of image.



Rotate the image 180°

"Composite Visible Image" Function – thermal image and visible image

The controller can be adjusted the transmission of thermal image and visible image on the screen with slide gauge and can be trimmed the thermal image of Picture-in-Picture by freely.



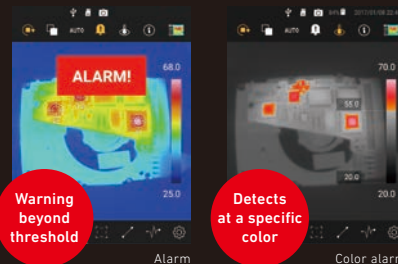
"LED Light" Function – Measuring in a dark place

The camera-head is equipped with "LED Light" can be turned on it by button of the controller. It is very useful when measuring by visible light in a dark place.



Various "Alarm" Function

An alarm will go off when the camera detects the temperature abnormality. Moreover, "Color Alarm Function" is also equipped for highlighting the specific temperature area.



Warning beyond threshold

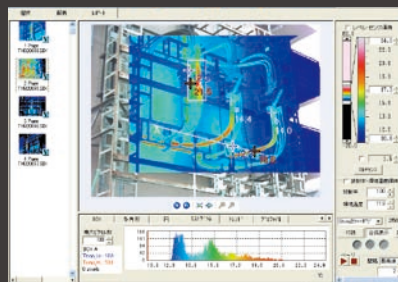
Detects at a specific color

Option PC Software Multi-Function Report Generator Program

InfReC Analyzer NS9500 Standard

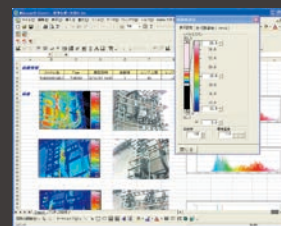
"Select" → "Analyze" → "Report"
3 Simple Steps Operation

"NS9500 Standard" can be analyzed such as MAX/MIN temperature of designated point, average temperature and Histograms. This software can be inserted thermal image, visible image and graph to the template, such as Excel or Word.



Main functions: Search by such as File Name, Measurement Day, Comment / Temperature Display, Emissivity Setting / Display Line Profile, Histograms and Trend Graph / Length/Square Measure Calculation / Radiated Heat Capacity Calculation / Report Generation (Excel, Word)

Temperature range can be changed in Word and Excel



NIPPON AVIONICS CO., LTD.
<http://www.avio.co.jp/>

Infrared Thermography Division
Sales department

TEL: +81-3-5436-1375 FAX: +81-3-5436-1393
Gotanda Kowa Bldg., 1-5, Nishi-Gotanda 8-chome, Shinagawa-ku, Tokyo 141-0031, Japan

Chubu Branch

TEL: +81-52-951-2926 FAX: +81-52-971-1327
Nakato Marunouchi Bldg., 17-6, Marunouchi 3-chome, Naka-ku, Nagoya-shi, Aichi 460-0002, Japan

Nishi-Nippon Branch

TEL: +81-6-6304-7361 FAX: +81-6-6304-7363
Shin-Osaka CSP Bldg., 9-1 Nishi Nakajima 1-chome, Yodogawa-ku, Osaka-shi, Osaka 532-0011, Japan



WARNINGS & CAUTIONS

•Before using product, please carefully read the provided Operation Manual "WARNINGS & CAUTIONS" section to ensure proper operation. •Please do not place the product in high temperature, high humidity or high inert gas environments.

Distributor: Per maggiori informazioni contattare:

INPROTEC IRT

Via Beethoven, 24

20092 Cinisello Balsamo (MI)

Tel. +39-02-66.59.59.77

Web: www.termografi.it e-mail: info@inprotec-irt.it