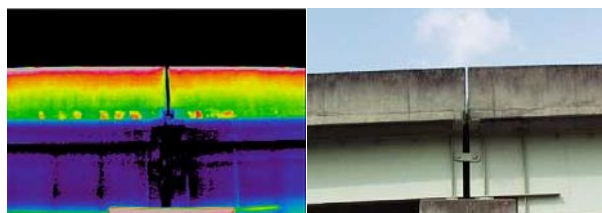


Infrared Thermal Imaging Camera

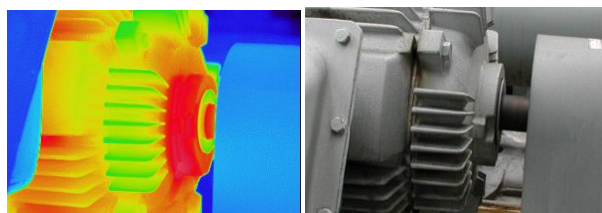
High Resolution・Multi-purpose Model

InfReC *R450 Series*

High resolution, high sensitivity, high precision !
Versatile model which is useful in wide variety of scenes from structure diagnosis to research of micro component.



Diagnosis of structure (Bridge)



PPM (Motor bearing, etc)

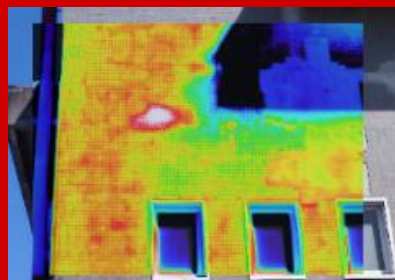
**High performance
at affordable price**



Feature 1

[Fine image for wider area]

FOV : 24°×18°
Pixels : 480×360
Spatial resolution : 0.87mrad

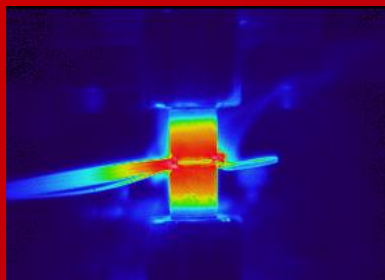


Building diagnosis

Feature 2

[Wide measurement range]

Room temp. to 1500℃
Changing temperature of object
can be measured in one range
without range change
※R450Pro

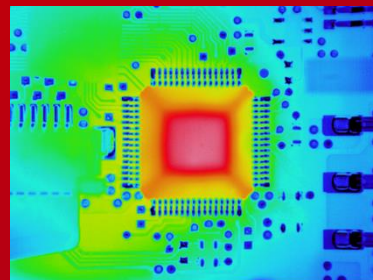


Observation of
heat storage/heat release

Feature 3

**[Close-up image
with high resolution !]**

960×720 pixels ※SR mode
Micro object can be measured
without optional lens



Thermal test of device



Composite mode support ease of viewing

■ Easy switch with one button



Side-by-side



Picture-In-Picture (transparency changeable)



Fusion (transparency changeable)

Automatic Movie Recording Feature Built In(R450Pro)

- Recording movie connected PC automatically by external trigger input to R450
- Data recording linked with test equipment and filed facility is available without configuring I/O system



Measuring Distance and F.O.V.

Field of View and Spatial Resolution are the same magnification with measuring distance.

Lens Type		2x Telephoto Lens	Normal Lens	2x Wide Angle Lens
L=1m	Field of View(H)x(V)	21x16cm	43x32cm	86x64cm
	Spatial Resolution	Normal Mode	0.45mm	0.9mm
		Super Resolution (SR) mode	0.3mm	0.6mm

Options

Options/Model		Specification/remarks
Lens	2x Telephoto lens, IRL-TX02C-B	12" (H) x 9" (V)
	2x Wide Angle Lens, IRL-WX02C-B	48" (H) x 36" (V)
	52 μ m Closeup Lens, IRL-C052UC	25mm(H) x 18.7mm(V), Working Distance 56mm
Accessory	AC adaptor, RC60G-09D-110V(US)/110V/220V	110V(US), 110V or 220V
	Rechargeable Battery Pack, 2UR18650F	2500mAh Driving Hours : 2.5 Hours (typical)
	Battery Charger, NC-LSC05-110V(US)/110V/220V	110V(US), 110V or 220V

■ Listed specifications, appearance and design are subject to change without notice. ■ Company and commodity names are trade names or registered trade marks of each company. ■ NIPPON AVIONICS Co., Ltd. will not be responsible for any damage of infrared detectors due to incoming strong light (e.g. laser) through lens(es). ■ This product is subject to Japanese Export Control Law. Depending on its destination, prior assessment and authorization may be required. When exporting from country of initial purchase destination, please be sure to follow that country's export regulations as it may require an export permit beforehand.

NIPPON AVIONICS CO.,LTD.

Overseas Sales Department
Industrial Electronic Products Sales Division
Shin-Yokohama Plant Shimamura-Building, 4475,
Ikonohe-cho, Tsuzuki-ku, Yokohama-shi,
224-0053, Japan
TEL: +81-45-930-3596 FAX: +81-45-930-3597
E-mail : product-irc-e@ml.avio.co.jp

<http://www.avio.co.jp/english/>

Specification

Feature	R450Pro	R450Pro-D	R450	R450-D
Basic Performance	Infrared Detector			
	Uncooled Focal Plane Array (Microbolometer)			
	Spectral Range			
	8 to 14 μ m			
	Measuring Range			
	-40 to 1500 °C			
	Sensitivity (NETD)			
	0.025 °C at 30 °C (with S/N improvement)			
	Accuracy			
	$\pm 1^\circ\text{C} \pm 1$			
Image Display	Frame Rate			
	40Hz			
	Detector Pixels			
	480(H) x 360(V) pixels			
	Recording Pixels			
	Standard mode: 480(H) x 360(V), Super Resolution (SR) mode: 960(H) x 720(V) *2			
	Field of View			
	24°(H) x 18°(V) (with standard lens)			
	Spatial Resolution			
	Standard mode: 0.87mrad, Super Resolution (SR) mode: 0.58mrad equivalent *3			
Measuring Functions	Focal Distance			
	10cm to infinity (with standard lens) *4			
	Focus			
	Auto / Manual			
	Auto Function			
	Auto Scale, Auto Focus, Full Auto			
	Color Palettes			
	7 palettes (Rainbow, Brightness, Hot-white, Hot-black, etc.)			
	Gradation			
	256 / 32 / 16 / 8 grade			
Storage & Output	Visible Camera			
	CMOS camera 5M pixels			
	Visible/Thermal Fusion			
	Side-by-side, Fusion (transparency changeable), Picture-In-Picture (transparency changeable)			
	Display Functions			
	1 to 8 times continuous zoom (with display positioning scroll), Grid Overlay, 9 images multi-display (replay mode)			
	Image Quality Improvement			
	Denosing, Averaging (with ghost rejection), Edge enhancement			
	Point Temperature			
	10 Movable Points, Temperature search: MAX/MIN x 1 each, Delta T			
Others	Temperature Display in Assigned Region			
	MAX, MIN and AVG in BOX (Up to 5 boxes)			
	Line Profile			
	Horizontal, Vertical, Horizontal & Vertical			
	Alarm Function			
	Alarm Display, Alarm Sound, Color Alarm, Alarm Recording,			
	Alarm Signal Output			
	N/A			
	Temperature Correction			
	Emissivity, Environmental/Background, Distance			
Interface	Emissivity			
	Multi-point Correction, Emissivity Table			
	Emissivity Reverse Calculation			
	N/A			
	Drift Stabilizer			
	Yes			
	Storage Device			
	SD card, Conforms to SDHC			
	Data Format			
	Still image : JPEG with temperature data, 14bit (with visible image)			
Data Storage	Movie : SVX file (Dedicated format)			
	Data Storage			
	Still image(JPEG with temperature data, 14bit), Recorded with visible image			
	Super Resolution (SR)			
	Yes			
	Quick Panorama			
	Horizontal equivalent to 75° / Vertical equivalent to 56°			
	SD Movie Recording			
	Max 5Hz			
	Interval Recording			
	3 sec to 60 min interval, with Visible image recorded			
Interface	External Trigger Recording			
	Yes			
	Voice Recording			
	30sec Recording, replay per a Thermal image			
	Text Annotation			
	Annotate up to 128 Characters per a Thermal Image, Characters imported from SD Card			
	USB2.0			
	Mass Storage			
	Yes			
	Movie Data Transfer			
Display	Thermal image: Max: 40Hz, Recorded with visible image *5			
	Thermal image: Max: 8Hz, Recorded with visible image *5			
	Thermal image: Max: 40Hz, Recorded with visible image *5			
	Thermal image: Max: 8Hz, Recorded with visible image *5			
	External Trigger Input			
	Automatic recording function by external trigger input			
	Video Output			
	NTSC / PAL Switchable			
	Alarm Output			
	Contact Signal, No Voltage			
Others	External Trigger Input			
	Pulse Signal			
	Display			
	3.5" LCD Monitor (with tilt and brightness adjustment), Color View Finder (with tilt adjustment)			
	Auxiliary			
	Laser Pointer (Red, class 2, IEC 60825-1 2007/2014), LED Light, Remote Controller			
	Resistance			
	Operating Temperature & Humidity			
	-15° C to 50° C, 90%RH (non-condensing)			
	Storage Temperature & Humidity			
	-40° C to 70° C, 90%RH (non-condensing)			
Battery Operation	Vibration & Shock			
	29.4m/sec ² (3G), 294m/sec ² (30G)			
	EMC			
	29.4m/sec ² (3G), 294m/sec ² (30G)			
	Dust & splash proof			
	Protection class IP54 equivalent			
	Battery Operation			
	2.5hours (Typ), Rechargeable Li-Ion battery			
	AC Power			
	100V ~ 220V AC, 50/60Hz			
Dimensions	Dimensions			
	Approx. H121mm x W105mm x D195mm (excluding projection)			
	Weight			
	Approx. 1.3kg (including Battery Pack)			
	Standard Accessories			
	Wired remote Controller x 1, SD Card x 1, USB Cable x 1, Neck Strap x 1, Grip Belt x 1, Rechargeable Li-Ion Battery x 1, Software x 1, Operation Manual x 1, and Carrying Case x 1			
	Standard Software			
	InfReC Analyzer NS9500Professional			
	InfReC Analyzer NS9500Standard *6			
	*1 Only the Range 1 at the environmental temperature from 20 to 30 °C (In other condition, it is $\pm 2^\circ\text{C}$ or $\pm 2\%$).			
	*2 Still Image Only			
	*3 This increased resolution results from detecting characteristic within all frames acquired by the SR process and removing such effects as those caused by hand vibration.			
	*4 For temperature accuracy : 30cm to infinity			
	*5 Thermal image only when image transfer speed at 40Hz			
	*6 In order to transfer thermal image movie data by R450 / R450-D, you need to upgrade to " InfReC Analyzer NS9500 Professional " (optional software).			

Power Kit

R450 series is not including AC adapter, battery charger and AC cables. Please order below Power Kit With R450 series main unit.

Item	Model	Specification/remarks
Power Kit	PKA-110VGM(US)	For 100 to 120V region (US)
	PKA-110VGM	For 100 to 120V region (Taiwan)
	PKA-220VGM	For 220 to 240V region (Europe and Asia)
		AC adapter x 1, battery charger x 1 and AC cable x 2



WARNINGS & CAUTIONS

- Before using this product, please carefully read the provided Operation Manual "WARNINGS" & "CAUTIONS" section to ensure proper operation.
- Please do not place the product in high temperature, high humidity or high inert gas environments.

INPROTEC IRT

Via Beethoven, 24
20092 Cinisello Balsamo (MI)
Tel. +39-02-66.59.59.77 Fax +39-02-66.04.13.34
Web: www.termografi.it e-mail: info@inprotec-irt.it